



STEALTHWATCH® FLOWSENSOR™ AE

Managing network performance with limited resources is increasingly challenging as networks grow in complexity and scope. Moreover, network operations teams lack adequate visibility into network, server and host communications to efficiently pinpoint and troubleshoot performance issues.

Without visibility into network traffic composition, network operations face considerable hurdles in determining whether problems are related to the user's workstation, the network or the server itself. The inability to diagnose end-user performance complaints or pinpoint security-related network performance problems can cause costly troubleshooting delays and exacerbate the user experience. Today's organizations require a scalable, cost-effective network performance monitoring solution that can support a global community of IT users.

To address this need, the StealthWatch FlowSensor AE appliance delivers flow-based response time management (RTM) that provides comprehensive visibility of network and server performance metrics. In conjunction with the StealthWatch System, these distributed, flow-based monitoring devices provide rapid resolution of network issues with minimum impact on the business.

Key Benefits:

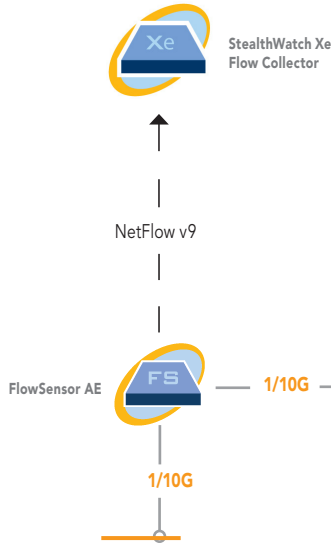
- ▶ Enables network and server **response time management at 1/3 the cost**
- ▶ Delivers **comprehensive visibility** into areas of the network that lack flow data or where traditional Ethernet sensor technology is too costly to deploy
- ▶ Reduces **Mean Time to Resolution (MTTR)** by distinguishing between server and network root cause
Improves regulatory compliance by tying suspicious network activity to users
- ▶ Leverages **lightweight, flow technology** to achieve flow-by-flow visibility into all network communications
- ▶ Eliminates the need for non-integrated userID resolution tools
- ▶ Delivers **unmatched security intelligence** for greater contextual awareness of network, server and host performance

StealthWatch FlowSensor AE helps organizations:

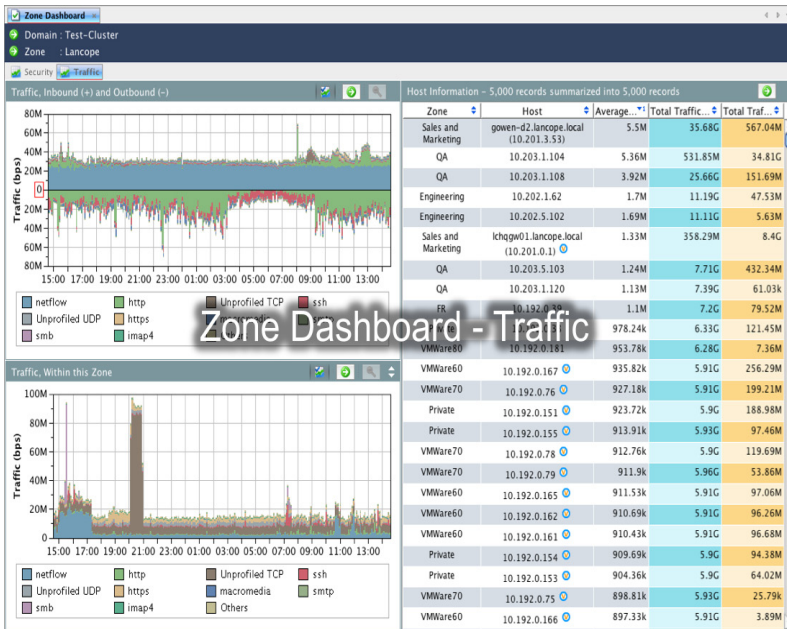
- ▶ Reduce Mean Time to Resolution (MTTR) of network and server performance issues by enabling network managers to easily distinguish between network and server root cause.
- ▶ Pinpoint security-related network performance problems. StealthWatch FlowSensor AE generates flow data that is analyzed by the StealthWatch Flow Collector to identify and prioritize suspicious network communications, including botnets, worms, policy violations and misconfigured network devices.
- ▶ Manage network communications down to the individual flow. Communications across the network are captured, stored and reported to deliver unmatched visibility into the nature of the organization's network traffic.
- ▶ Increase network operations staff productivity through quick diagnosis and resolution of end-user performance complaints.

How It Works

The StealthWatch FlowSensor AE passively monitors all host and server communications and network traffic statistics, translating them into "flow records" which are sent to StealthWatch Flow Collectors for detailed analysis. Service desk administrators, network operators and security analysts use this context rich network intelligence from StealthWatch to detect, diagnose, verify and manage network and server performance and security issues in real-time.



StealthWatch FlowSensor AE Key Features



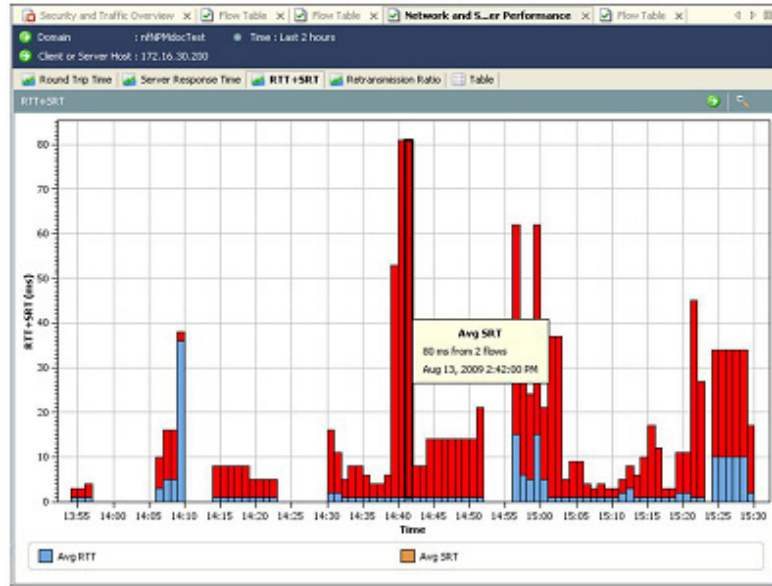
Customizable dashboards display interactive, flow-derived charts and tables for complete network visibility

Comprehensive Network Visibility

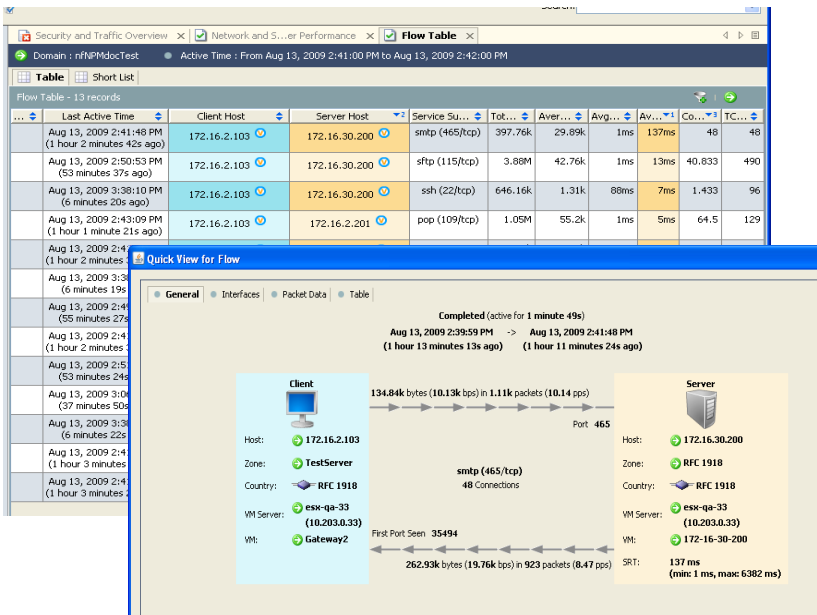
The StealthWatch FlowSensor AE delivers visibility into areas of the network that do not support flow reporting technologies like NetFlow or sFlow. With its effective traffic deduplication technology, the sensor allows each interface to be connected to switch SPAN ports, tap interfaces, or mirrored network segments without concern for double counting traffic volumes. Flows from traditional routers and switches are combined with flows from the StealthWatch FlowSensor AE to create a comprehensive view of all network communications regardless of the network equipment involved.

Flow-based Response Time Management

StealthWatch FlowSensor AE utilizes lightweight NetFlow v9 technology for troubleshooting response time issues. Server Response Time (SRT), Round Trip Time (RTT), number of connections and Retransmission Rate serve as the basis for the FlowSensor AE response time management and are calculated on a flow-by-flow basis before export to the StealthWatch Flow Collector. At-a-glance graphs plot server and network response times on a per host basis for rapid verification and identification of end-user response time issues, both past and present. Context sensitive drill downs allow quick navigation from traffic charts to individual flows.



StealthWatch FlowSensor AE presents key performance metrics via stacked round trip time (RTT) and Server Response Time (SRT) graphs



Intuitive GUI and easy drill down analysis enables Quick View displays for flow-by-flow visibility

Automated Troubleshooting, Analysis and Forensics

The StealthWatch System leverages over 160 proprietary algorithms to automate many of the most common forms of flow analysis. This automated analysis of flows serves to reduce manual efforts associated with traditional network monitoring tools. Visual cues, colorful graphs and drill down capabilities provide high level, enterprise wide perspective down to granular host flows in three simple clicks.

With detailed network visibility, StealthWatch FlowSensor AE enables network operations teams to streamline and expedite troubleshooting efforts from hours to minutes. The sensor quickly identifies network and server response time issues and root cause. With its powerful security context, the the FlowSensor AE can also reveal security threats that are impacting response time.

Enterprise Performance and Scalability

Scalable up to 10G networks, the StealthWatch FlowSensor AE passively monitors and collects host and service communications and network traffic statistics. This sensor is the first tier of the StealthWatch System’s distributed, three-tier architecture, which enables scaling to support the most demanding enterprise networks. The StealthWatch System collects flows from thousands of exporters and supports the global community of IT users.

Product Specifications

Item	AE-1000	AE-2000	AE-3000
Throughput	1.0 Gbps	2.5 Gbps	5.0 Gbps
Interfaces	3 or 5	3 or 5	1 or 2
Speed	10/100/1000	10/100/1000	10G
Physical Layer	3 Cu + 2 Fiber/Cu	3 Cu + 2 Fiber/Cu	Fiber
Form Factor	1U	1U	1U
Power	Single; 250W	Redundant, hot-swappable; 717W	
Appliance Dimensions	4.24 H x 43.4 W x 39.37 D (cm) 1.67" H x 17.1" W x 15.5" D (in)	4.26 H x 48.24 W x 77.2 D (cm) 1.68" H x 19" W x 29" D (in)	
Appliance Weight	8.058 kg (17.77 lb)	17.69 kg (39 lb)	
Environment			
	Temperature	Operating: 10° to 35°C (50° to 95°F) Storage: -40° to 65°C (-40° to 149°F)	
	Relative Humidity	Operating: 20% to 80% (noncondensing) Storage: 5% to 95% (noncondensing)	
	Maximum Vibration	Operating: 0.26 Grms at 5–350 Hz for 5 min in operational orientations Storage: 1.54 Grms at 10–250 Hz for 10 min in all orientations	
	Altitude	Operating: -16 to 3048 m (-50 to 10,000 ft.) Storage: -16 to 10,600 m (-50 to 35,000 ft.)	
Regulatory			
FCC (U.S. only) Class A ICES (Canada) Class A CE Mark (EN 55022 Class A, EN55024, EN61000-3-2, EN61000-3-3) UL 60950-1 CAN/CSA C22.2 No. 60950-1 EN 60950-1 IEC 60950-1 - Please inquire for full list -			

Request a demonstration of StealthWatch at www.lancope.com

About Lancope, Inc.

Lancope®, Inc. is the leader in NetFlow™ Collection and Analysis and the provider of the StealthWatch System for flow-based network performance and security monitoring. Delivering unified visibility across physical and virtual networks, StealthWatch eliminates network blind spots and reduces total network and security management costs.

Lancope Headquarters

3650 Brookside Parkway
Suite 400
Alpharetta, GA 30022

+1.770.225.6500 (US)
888.419.1462 (US Toll Free)
+44 (0)560 344 8075 (International)
[Website: www.lancope.com](http://www.lancope.com)
[E-mail: sales@lancope.com](mailto:sales@lancope.com)

©2010 Lancope, Inc. All rights reserved. Lancope, StealthWatch, and other trademarks are registered or unregistered trademarks of Lancope, Inc. All other trademarks are properties of their respective owners.

DS07092010